

Unearthed

A History Outreach Workshop

Overview

How do we know about the past? Our Unearthed outreach workshop explores what we can discover using archaeological finds. This outreach session is delivered by a museum staff member in your school and uses original historical objects from a wide range of eras. In total there are 90 handling objects, all typical things found in archaeological digs. They come in 10 separate boxes allowing a whole class to work in small groups on their own set of historical objects.

Session learning aims

- To introduce learners to people's lives from Oxford's past.
- Provide an opportunity for pupils to handle original archaeological finds.
- To find out how we answer questions about the past using archaeology.

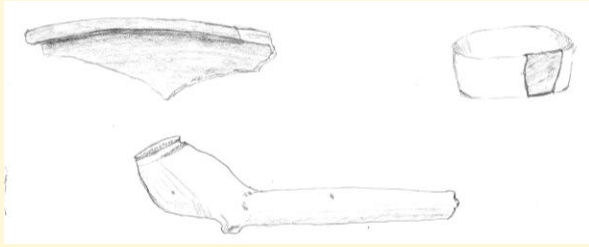


Proposed workshop plan

Timings are for guidance. If you wish to add a short break into the session or an amendment, please discuss this with the Museum team when booking the session.

Welcome & Timeline (15 min)

We discuss the aims of the session. As a starter, we get the group to order broad eras into a timeline.



Challenge One: Observational Drawing (15 min)

Archaeologists have to record objects that they find quickly and accurately – they have to carefully observe details.

The pupils select one object to draw. We

ask them to draw quickly, without rubbers and record what they see. Their best example can be shared with the whole group.

Challenge Two: Mystery object (15 min)

Their task is to observe the objects with the aid of questions on a task card and magnifying glasses to focus their thoughts. They need to find out all they can about it and discuss it with your group. What clues can you find and what do they tell us about life in Oxford in the past?

Challenge Three: Chronological task (15 min)

Using all the information they have gathered so far, groups need to arrange the objects in chronological order. To help them, the class have their timeline from the introduction.



Plenary and Goodbye (15 min)

Groups feedback on what they have discovered about the objects in the box and share what they think they fit on the timeline. The session leader discusses some of the key things to be found and what they tell us about people's lives in the past.

Curriculum links

History

- Know and understand the history of these islands as a coherent, chronological narrative, from the earliest times to the present day.
- Understand historical concepts such as continuity and change ... and use them to make connections, draw contrasts, analyse trends, frame historically-valid questions ...
- Understand the methods of historical enquiry, including how evidence is used rigorously to make historical claims, and discern how and why contrasting arguments and interpretations of the past have been constructed.

KS2 History

- Changes in Britain from the Stone Age to the Iron Age.

- The Roman Empire and its impact on Britain.
- Britain's settlement by Anglo-Saxons and Scots.
- A local history study
- A study of an aspect of history or a site dating from a period beyond 1066 that is significant in the locality (reflected in objects and topics selected)

History by Bike

In spring 2023 we can visit your school with all our unearthed museum boxes using our Museum of Oxford bike. This offer is only available to schools within a 4-mile radius of Oxford Town Hall, this includes all schools in Oxford City Boundary.*



Workshop costs

The workshop is 60 to 75 minutes hour long, depending on your needs. We charge £120 for travel and delivery of one session. The maximum number of pupils per session is 40. Every consecutive session after that costs just £50 each. Therefore one class will cost £120, two classes £170, three classes £220 etc. We charge £5 administration fee for raising an invoice.

How to book

Email the Museum: museum@oxford.gov.uk

Call the Museum: 01865 252334

Finally, you can visit our website for more information: <https://museumofoxford.org/>

* Other travel methods such as taxi or bus may be needed depending on weather and road conditions. If you are outside the 4-mile radius, we may still be able to visit, please enquire for details.